



MODULAR STRUCTURES

Modular Structures

INCYE



Applications:

- Extensions to houses in the countryside
- Modular buildings (homes, offices, classrooms, warehouses...)
- Structures for audiovisual (exhibitions, fairs, stages, advertising supports...)



Modular Structures

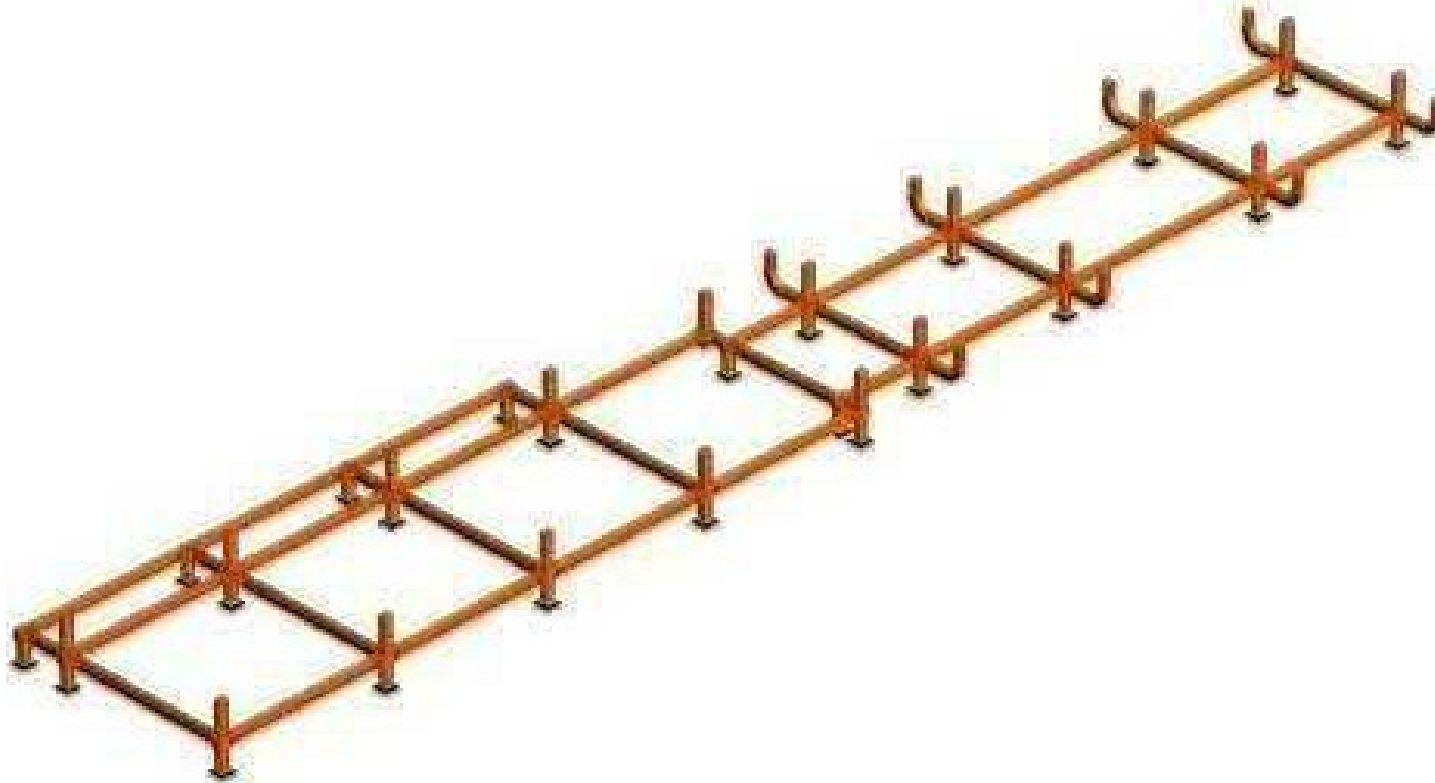
- It can be enlarged, reduced or even adopt another type of architectural configuration.



- Its interior is open-plan, so that any possible distribution of compartmentalisation and spatial reconfiguration can be adopted.

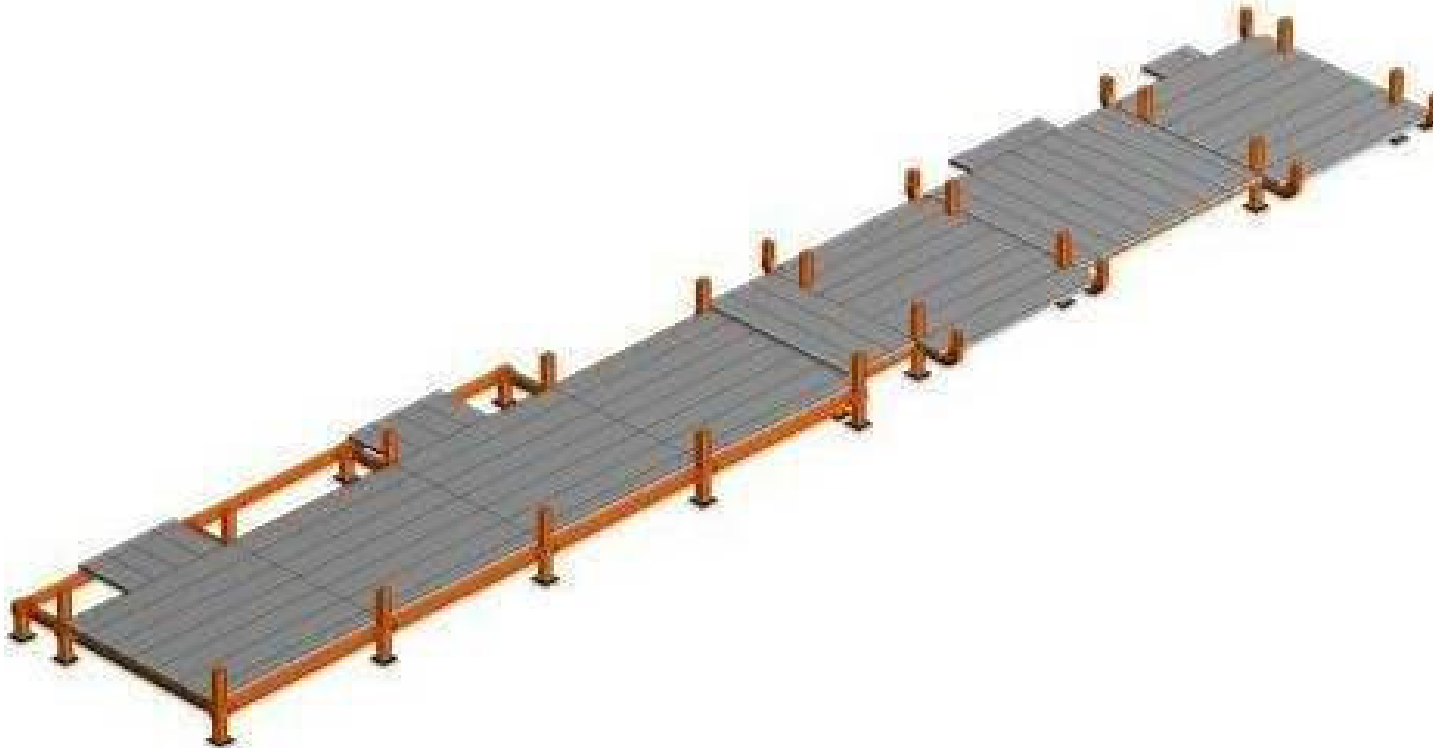
Modular Structures

- Main structure: Superslim (hollow-core steel beam system)



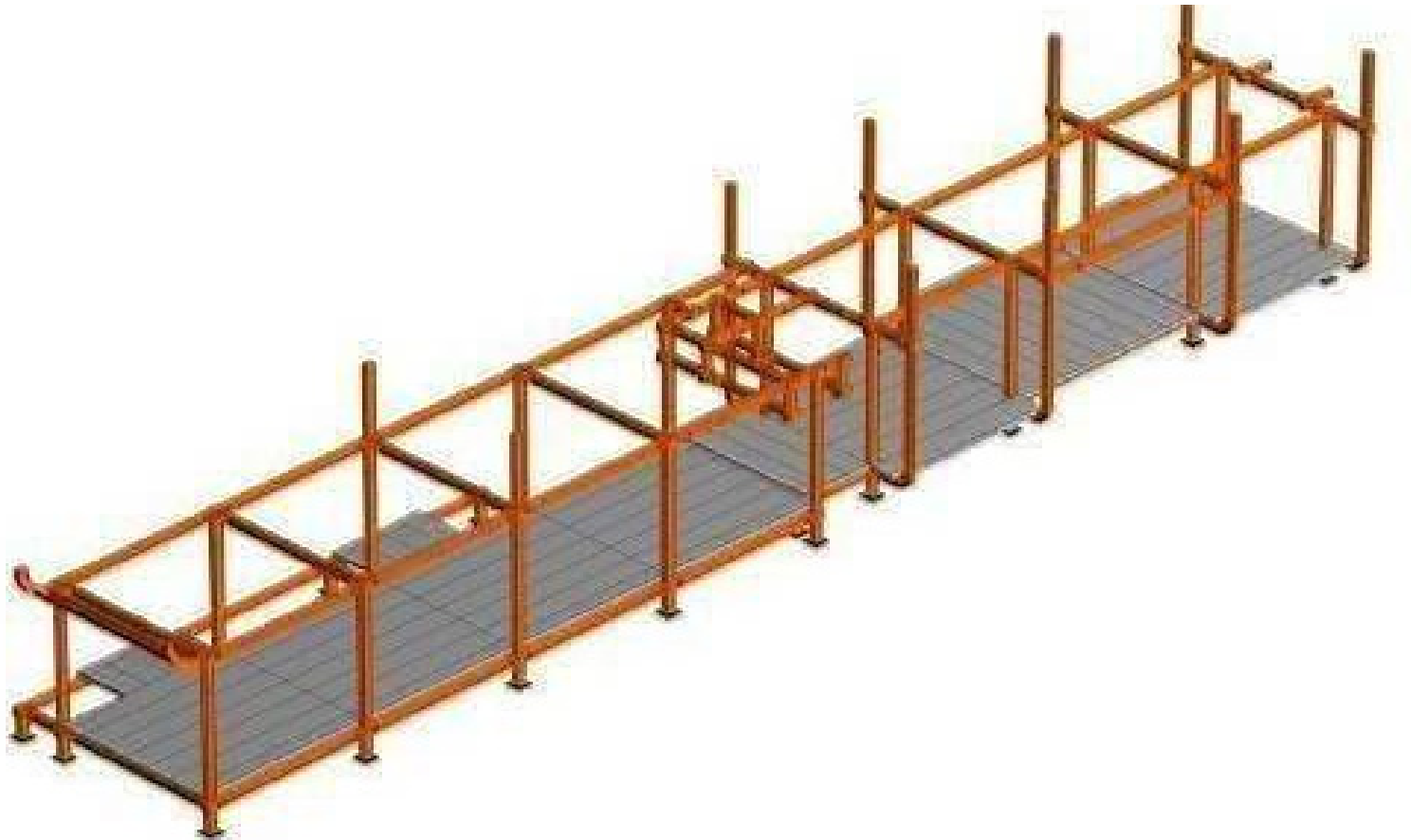
Modular Structures

- Meccano assembly



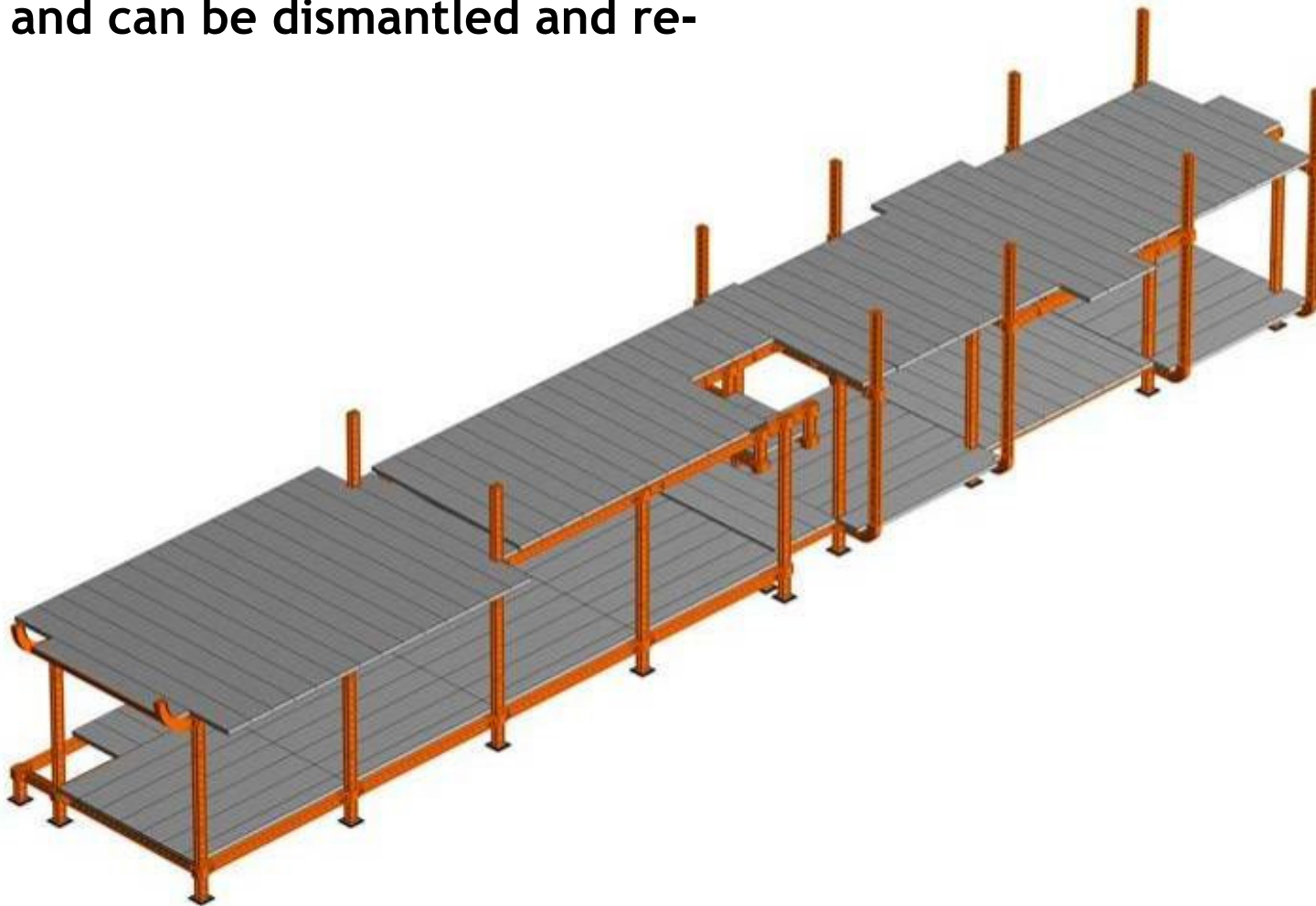
Modular Structures

- Modular system, temporary or permanent, easy to assemble and disassemble



Modular Structures

- All parts are coded and simple to assemble with screws and can be dismantled and re-used.

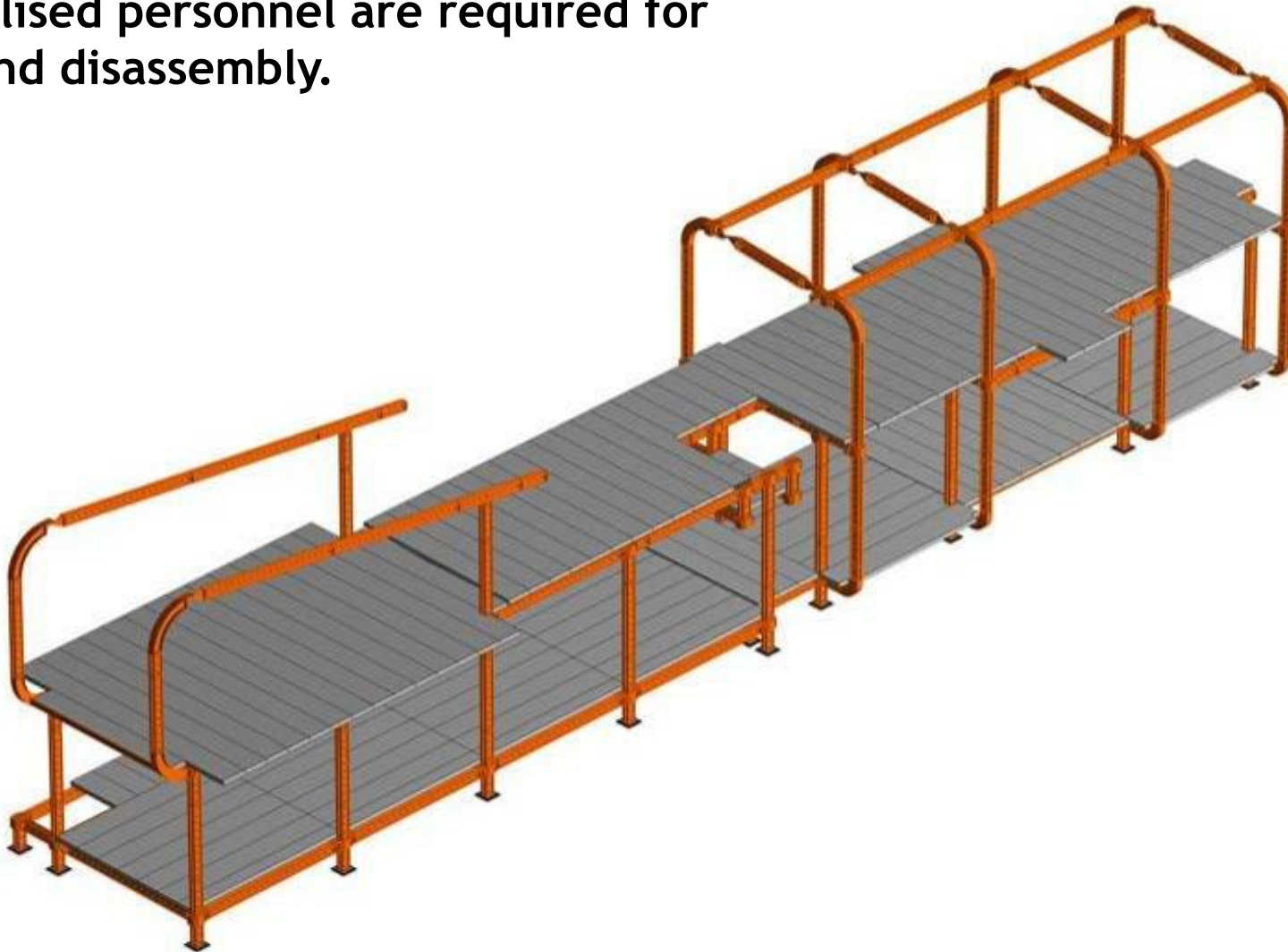


Modular Structures

INCYE

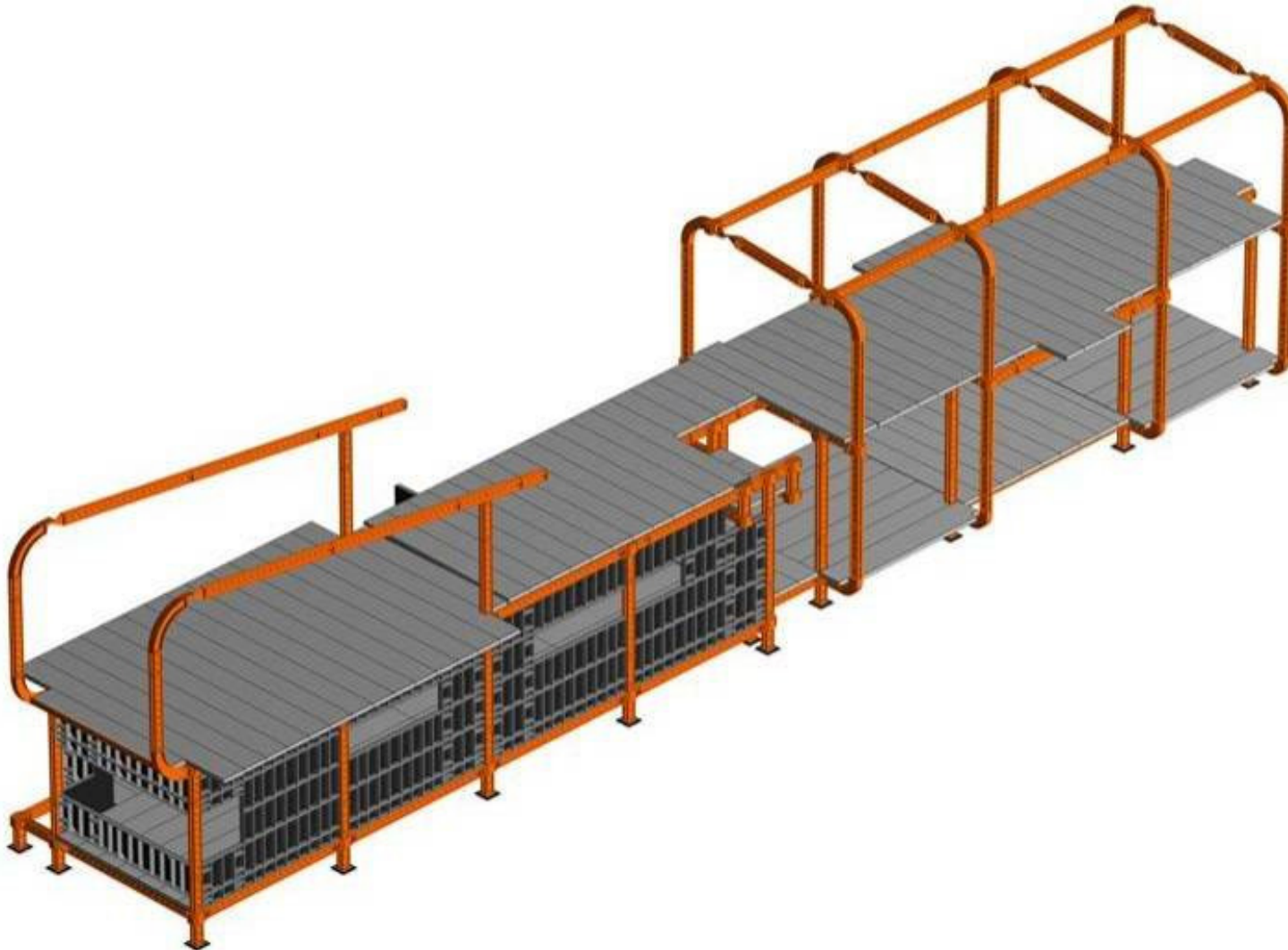


- No specialised personnel are required for assembly and disassembly.



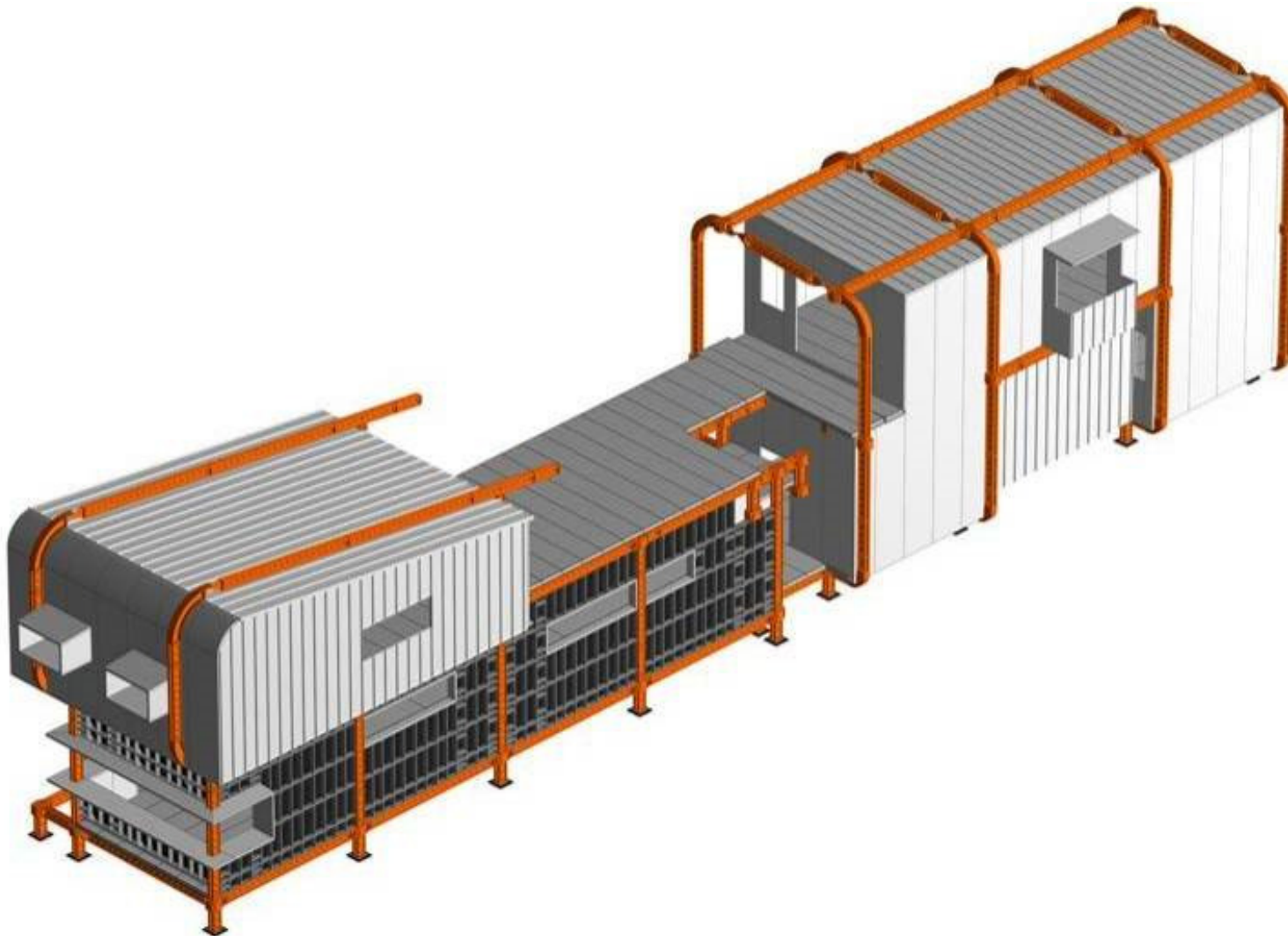
Modular Structures

INCYE



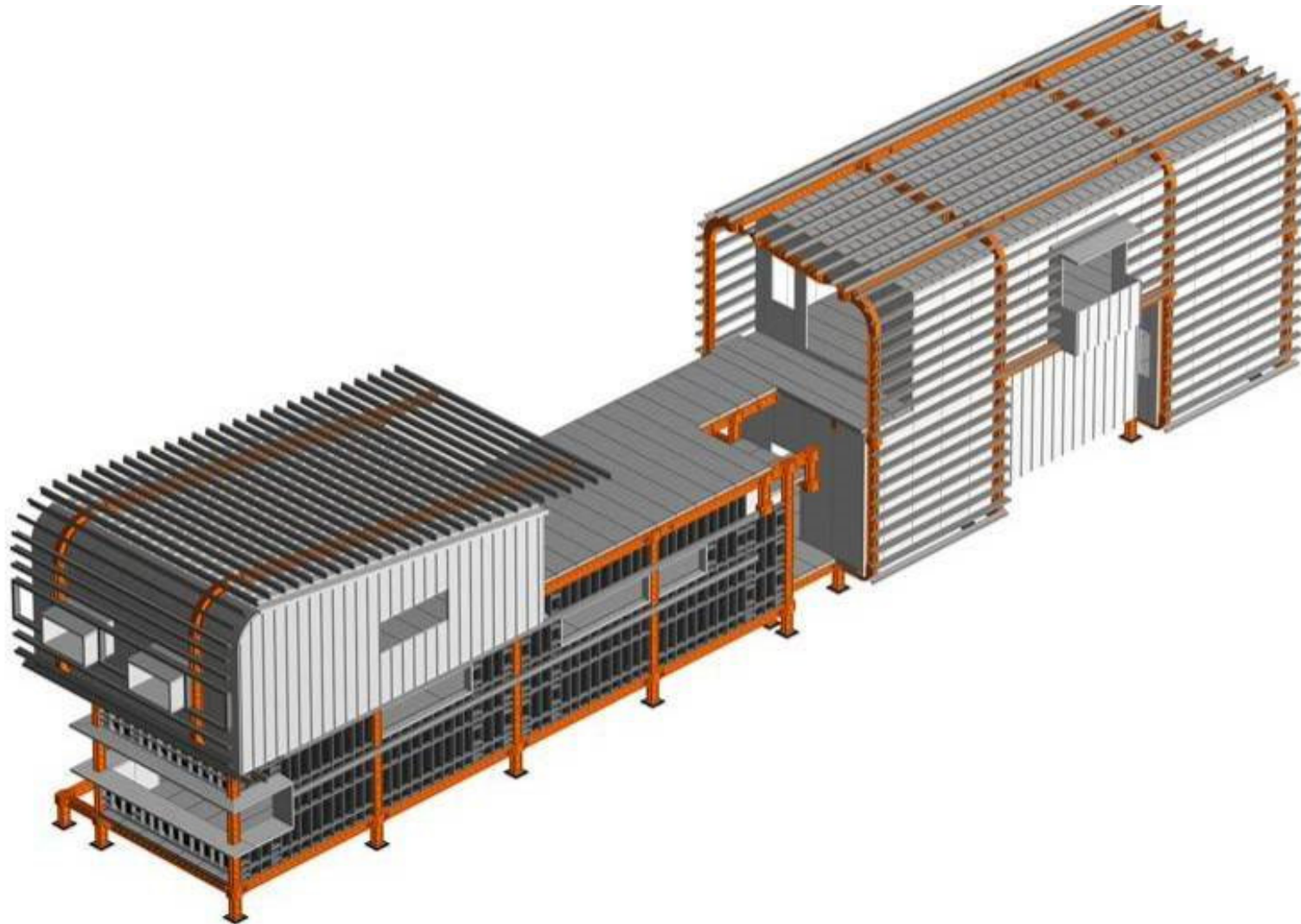
Modular Structures

INCYE



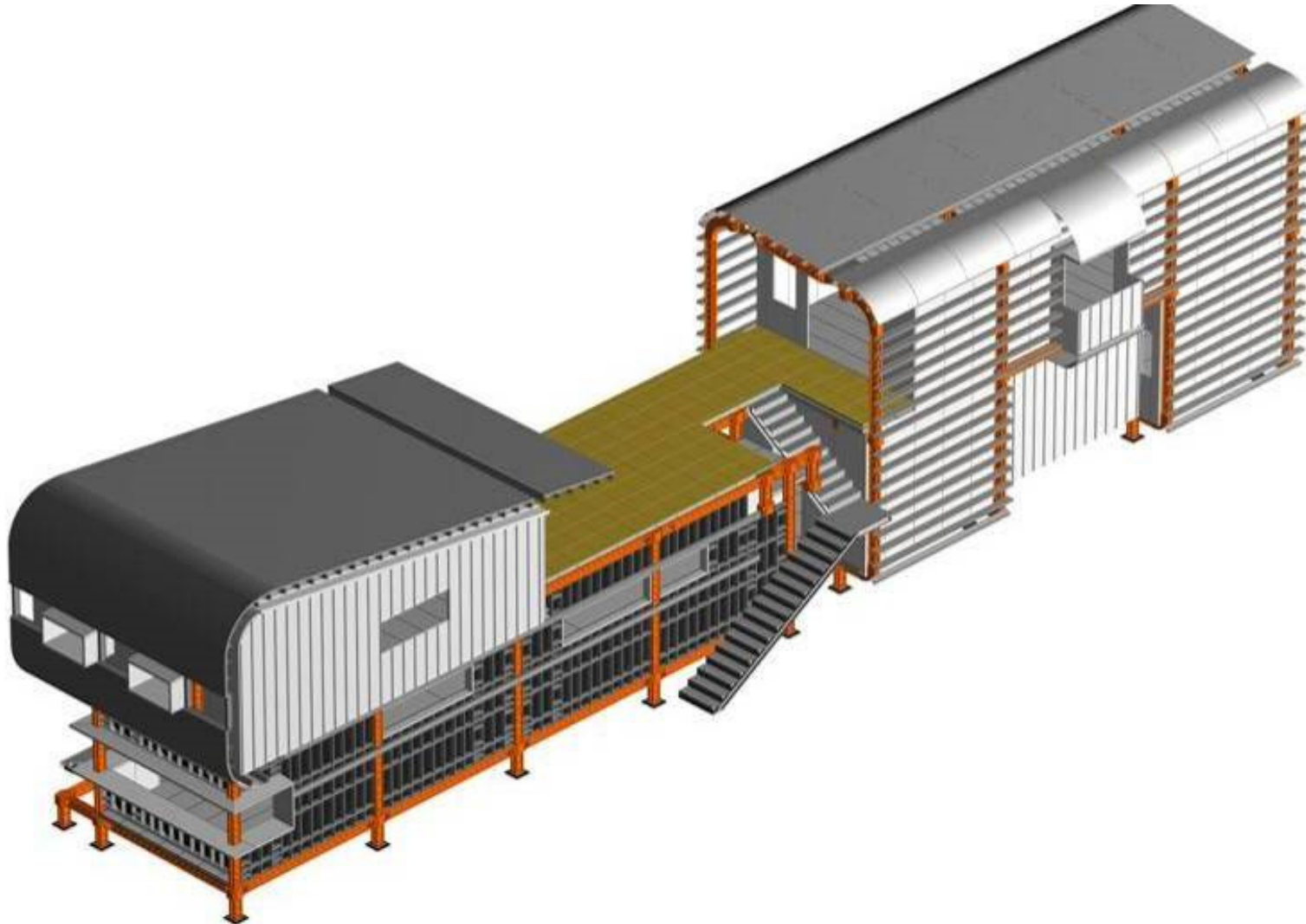
Modular Structures

INCYE



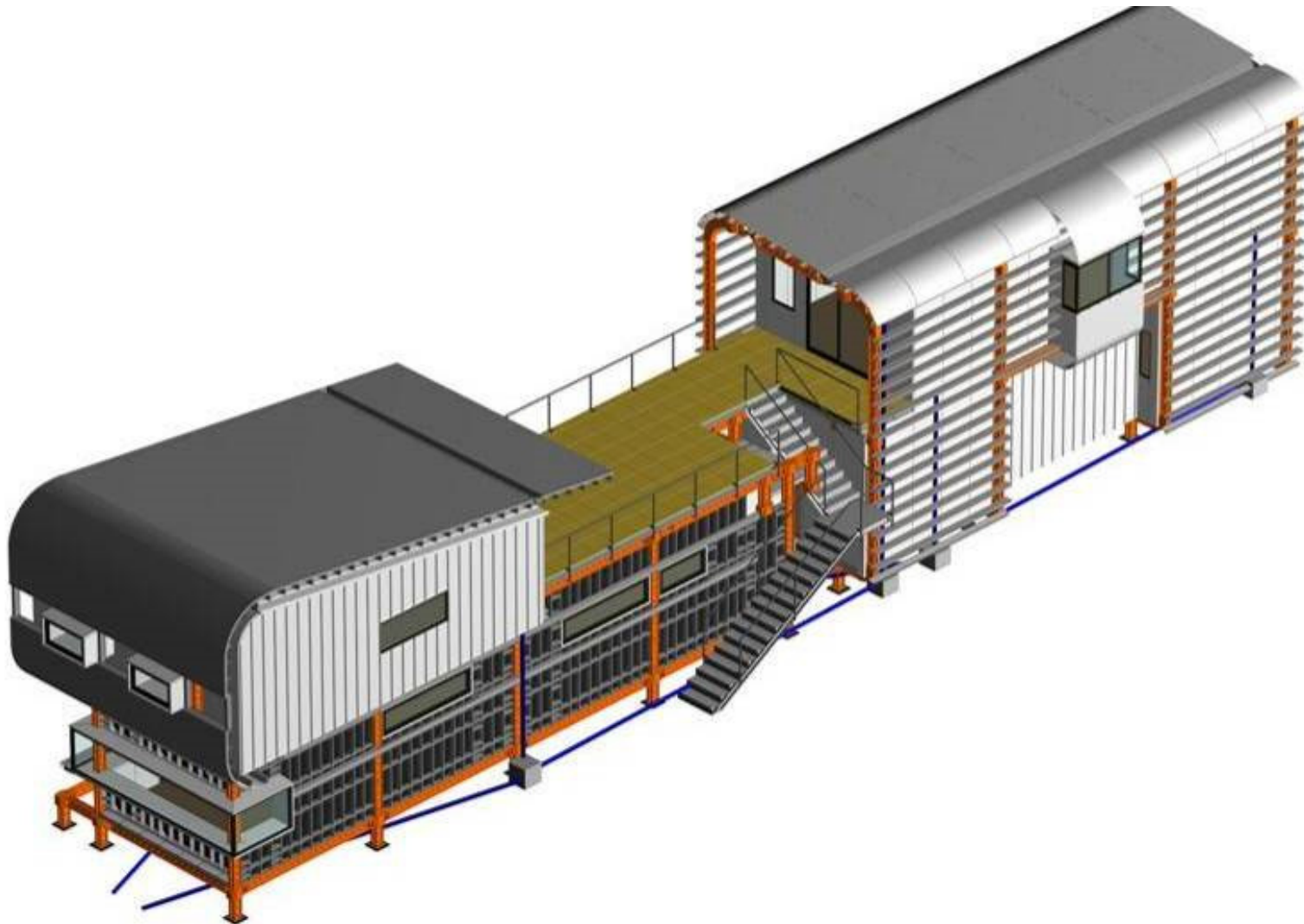
Modular Structures

INCYE



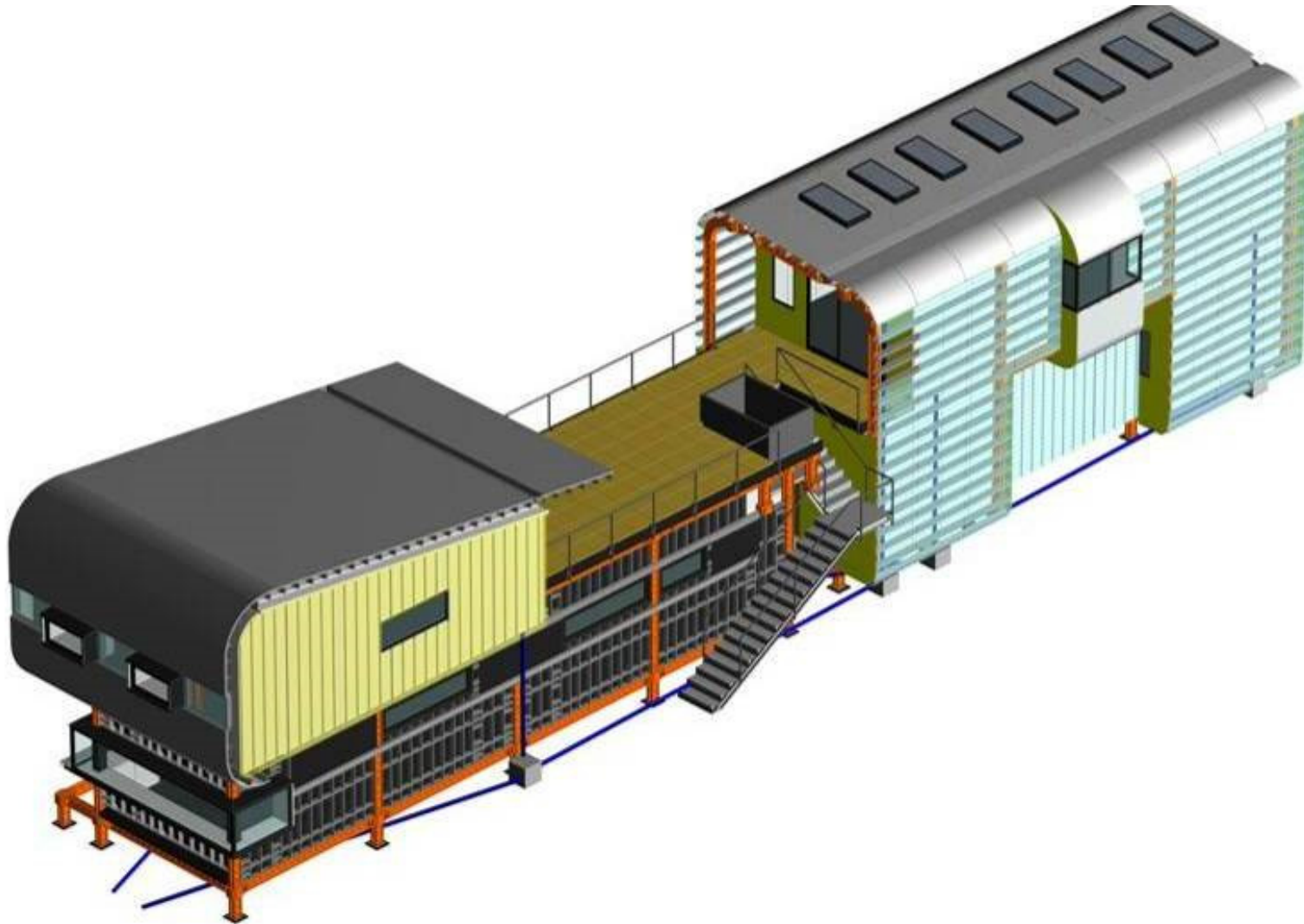
Modular Structures

INCYE



Modular Structures

INCYE



Modular Structures

INCYE



- As it can be dismantled, no building permit is required.



Example of a real case: Modular house and office, Torrejón del Rey

INCYE



Different types of leg supports
to adapt to any terrain

Example of a real case: Modular house and office, Torrejón del Rey

INCYE

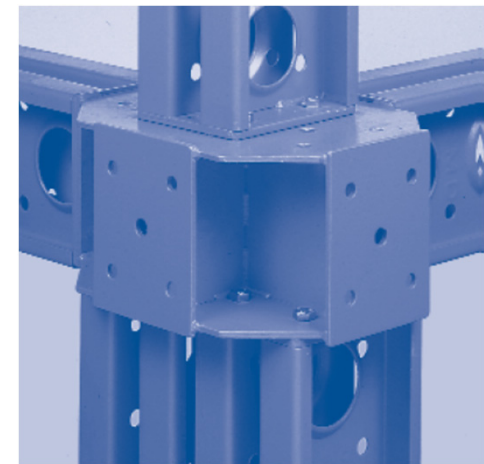
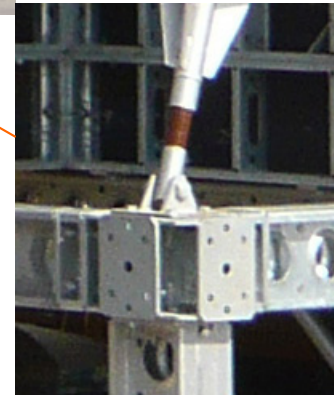


Example of a real case: Modular house and office, Torrejón del Rey

INCYE



Simple assembly of parts using
screws



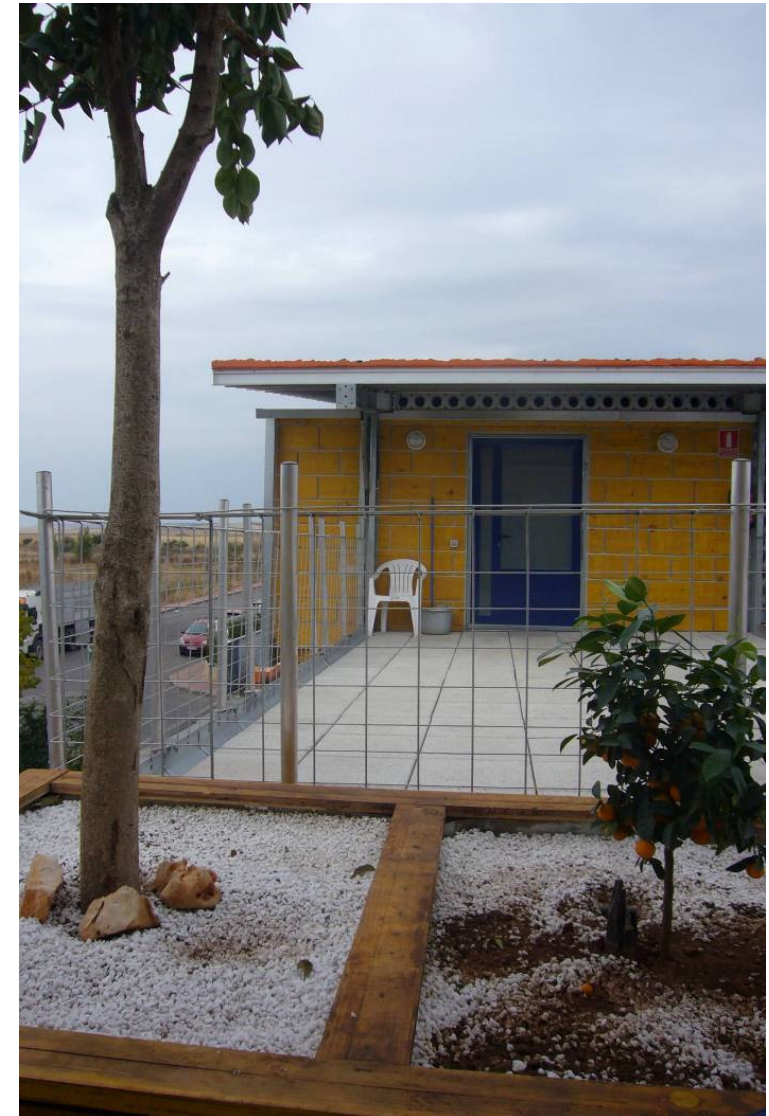
Example of a real case: Modular house and office, Torrejón del Rey

INCYE



Example of a real case: Modular house and office, Torrejón del Rey

INCYE



Other projects made with Superslim

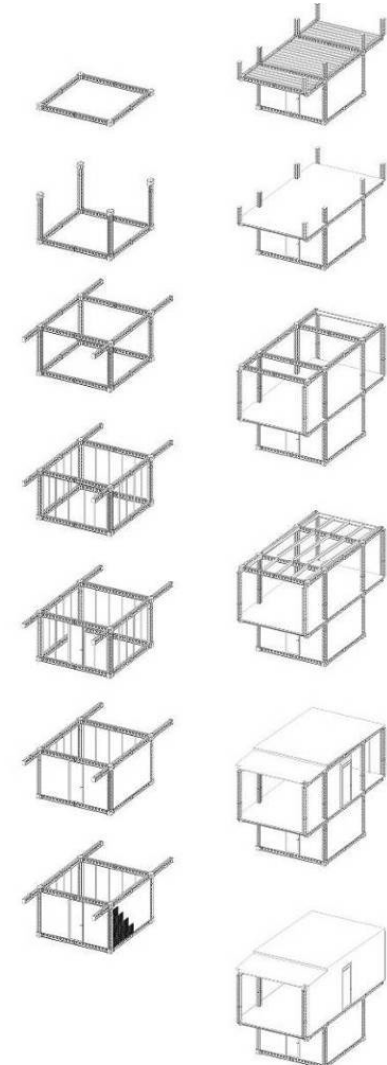
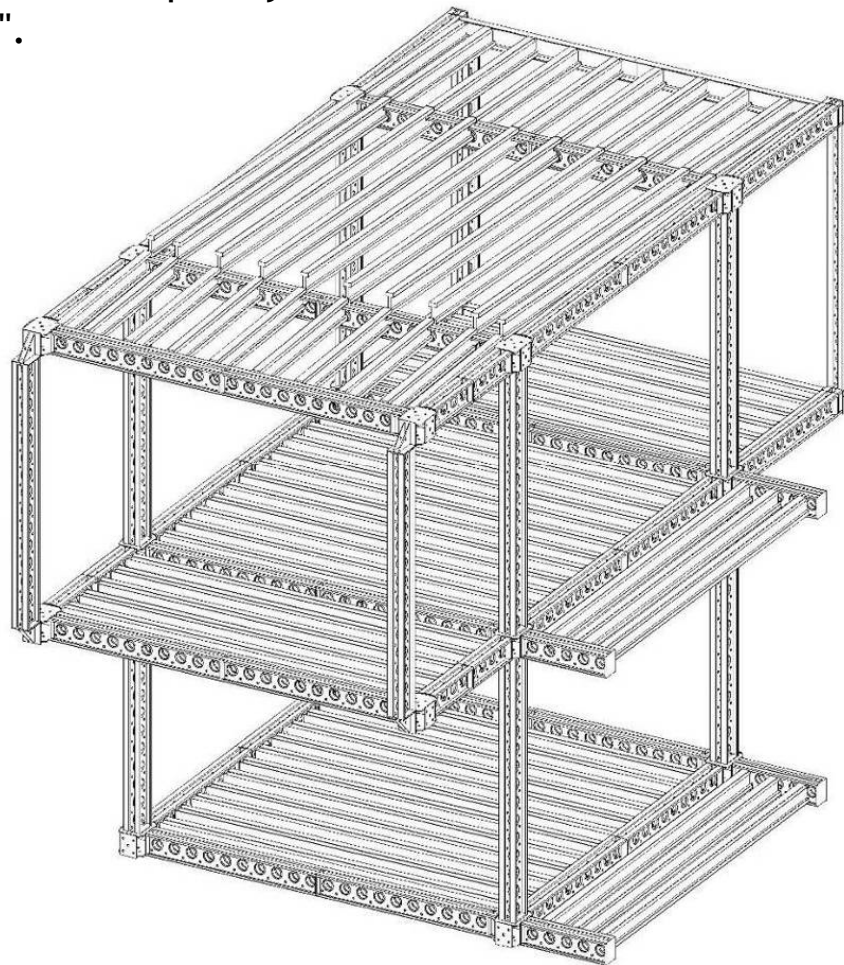


"Chicken House" Prototype presented at Construmat

INCYE

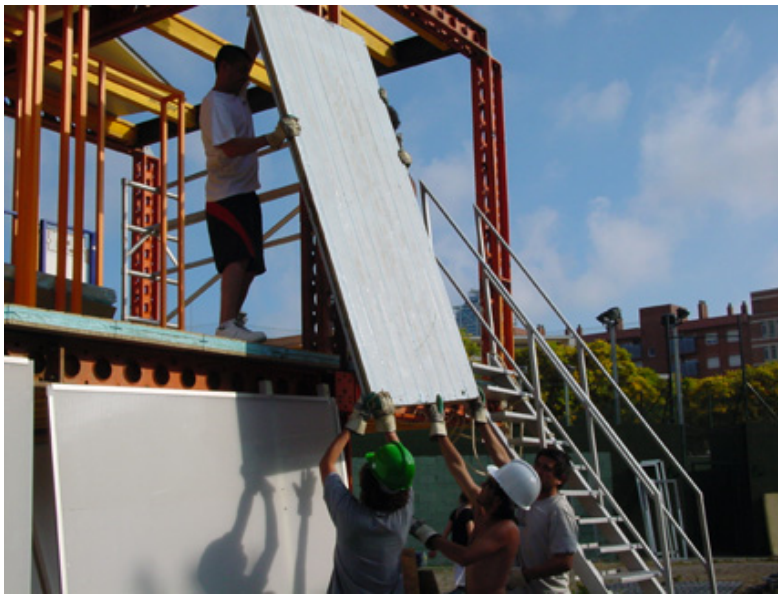


- "Stackable housing module for temporary occupation of plots of land".
- Economic prototype of minimum housing, capable of being grouped and generating residential nuclei of easy implementation and evolutionary assembly.
- 32 m² and 14 m² of storage space.



“Chicken House” Prototype presented at Construmat

INCYE



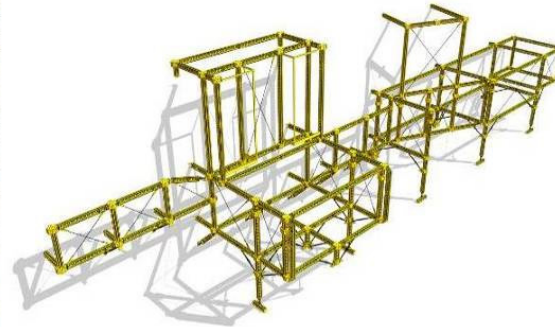
“Chicken House” Prototype presented at Construmat

INCYE



Institutional Prosthetics

Espai d'Art de Castellón



- This involved the construction of a classroom attached to the outside of the contemporary art centre building, with ramps that colonised two terraces, previously inaccessible.

Institutional Prosthetics

Espai d'Art de Castellón

INCYE

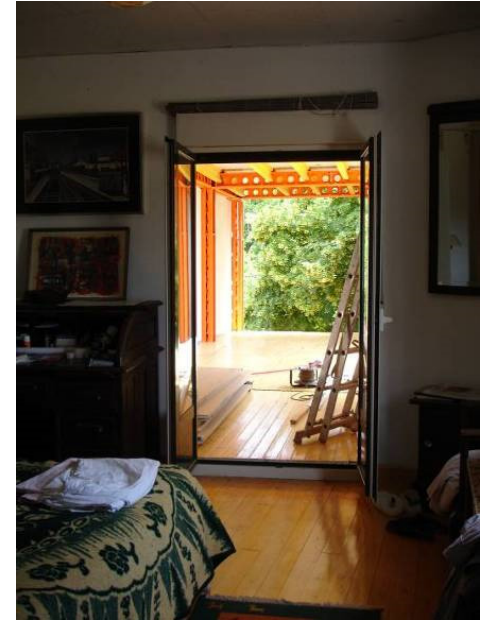


- Materials: Superslim metal structure and recycled plastic cassettes.
- Surface area: 143 m2 for the two classrooms

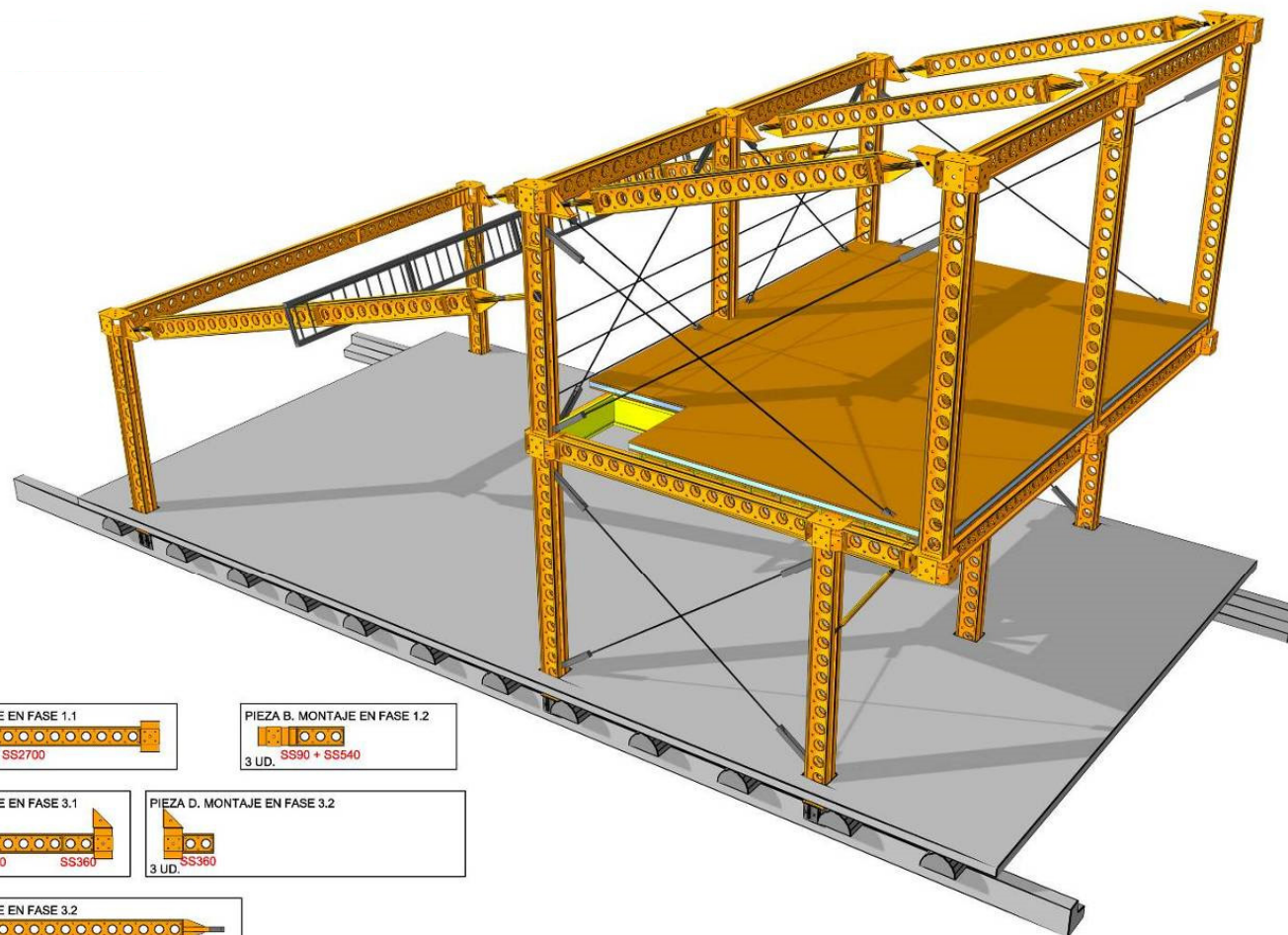


Housing extension

- Main structure:
Superslim steel beams



Project by Asociación Aula Abierta, Granada



PIEZA A. MONTAJE EN FASE 1.1
5 UD. SS2700

PIEZA B. MONTAJE EN FASE 1.2
3 UD. SS90 + SS540

PIEZA C. MONTAJE EN FASE 3.1
3 UD. SS1800 SS360

PIEZA D. MONTAJE EN FASE 3.2
3 UD. SS360

PIEZA E. MONTAJE EN FASE 3.2
3 UD. SS2700

PIEZA F. MONTAJE EN FASE 4.1
2 UD. SS180 SS720

PIEZA G. MONTAJE EN FASE 5.1
2 UD. SS360 SS1800 SS2700

Project by Asociación Aula Abierta, Granada

INCYE



- A building belonging to the Diputación de Granada was dismantled before its demolition in order to build a self-managed space with the collaboration of the Aula Abierta Association.

Project by Asociación Aula Abierta, Granada

INCYE



- Materials: A building dismantled piece by piece, material from other works and Superslim metal structure.

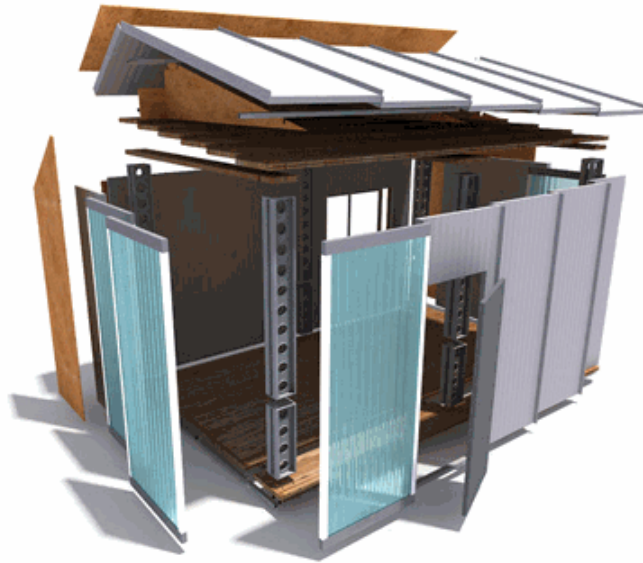
Rooftop Apartment

- "Illegal" housing on a communal rooftop set up by a group of friends
- Built on rooftops and terraces in order to provide a solution for low-income people to access housing.



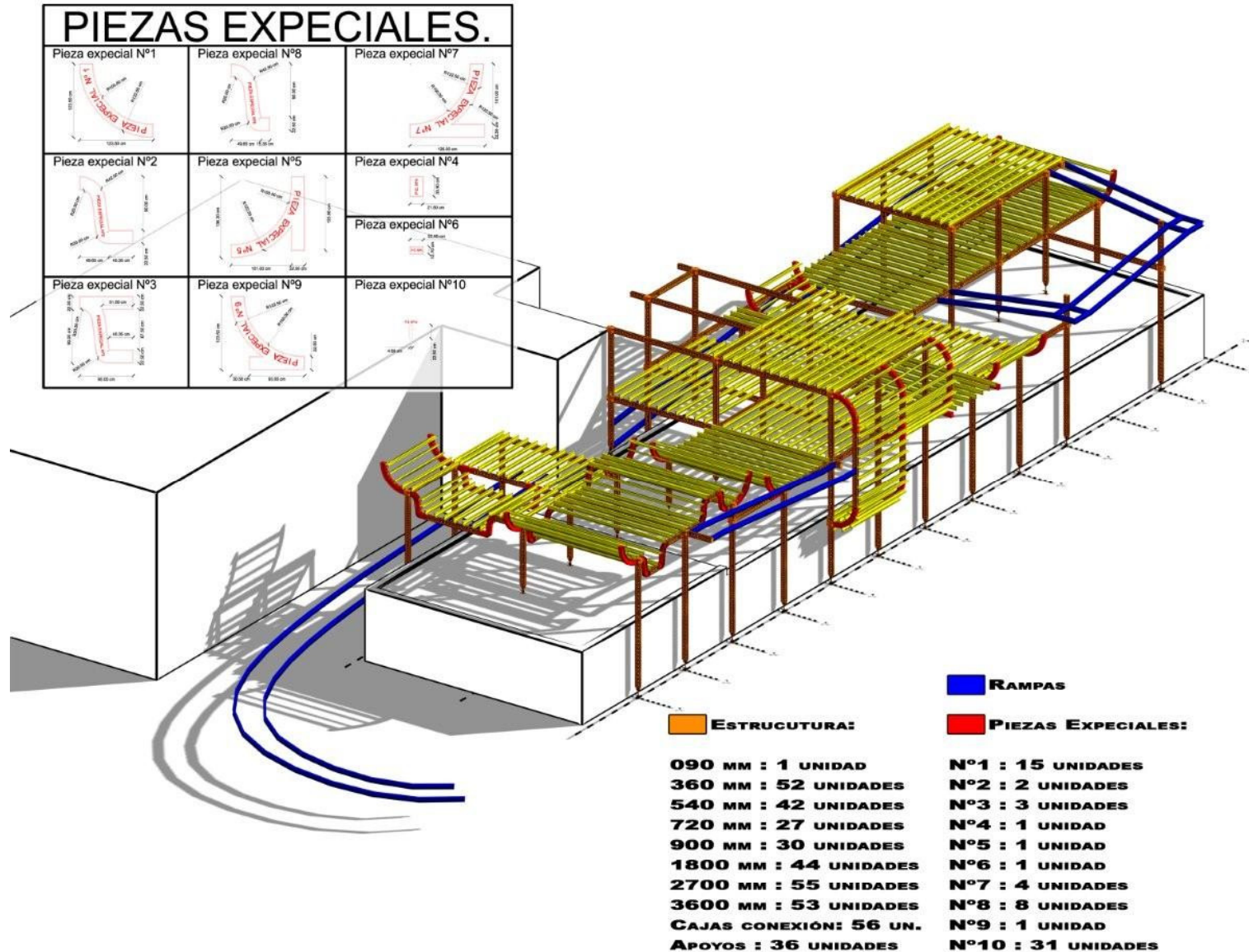
Rooftop Apartment

- Materials: Wooden floor slabs, Superslim structure, and lightweight cladding elements.



Art School in the Matadero, Madrid

- Construction of workshops on the roof of the school building, using dry and reversible construction techniques.



Art School in the Matadero, Madrid

INCYE



**Other projects
carried out for
various applications**

Domino21 project, presented at Construtec

Modular housing prototype

INCYE



- The aim of the project is to achieve collective dwellings that are highly adaptable to the needs of the occupant and easy to modify over time: with high spatial flexibility.
- Main structure: RMD Kwikform's Superslim and Megashor modular steel system.



Domino21 project, presented at Construtec

Modular housing prototype



- The ground floor+2 storey building, with a walkable roof, took only 15 days to build and another 7 days to dismantle.
- It included 500 m² of floor slab that housed 5 different standardised dwellings, all with their services and supply networks installed.



Demountable warehouse

INCYE



Detachable cover

INCYE



Exhibition in Tarifa

Environmental Classroom R.E.E.

INCYE



Casa Barcelona Pavilion, Construmat

INCYE



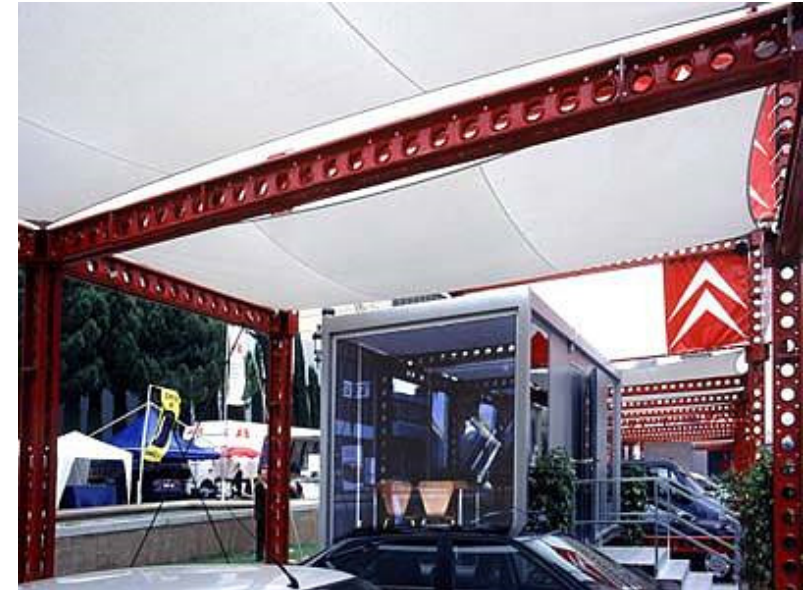
Stand of Securman, Construmat

INCYE



Citroën exhibition stand Motor Show, Barcelona

INCYE



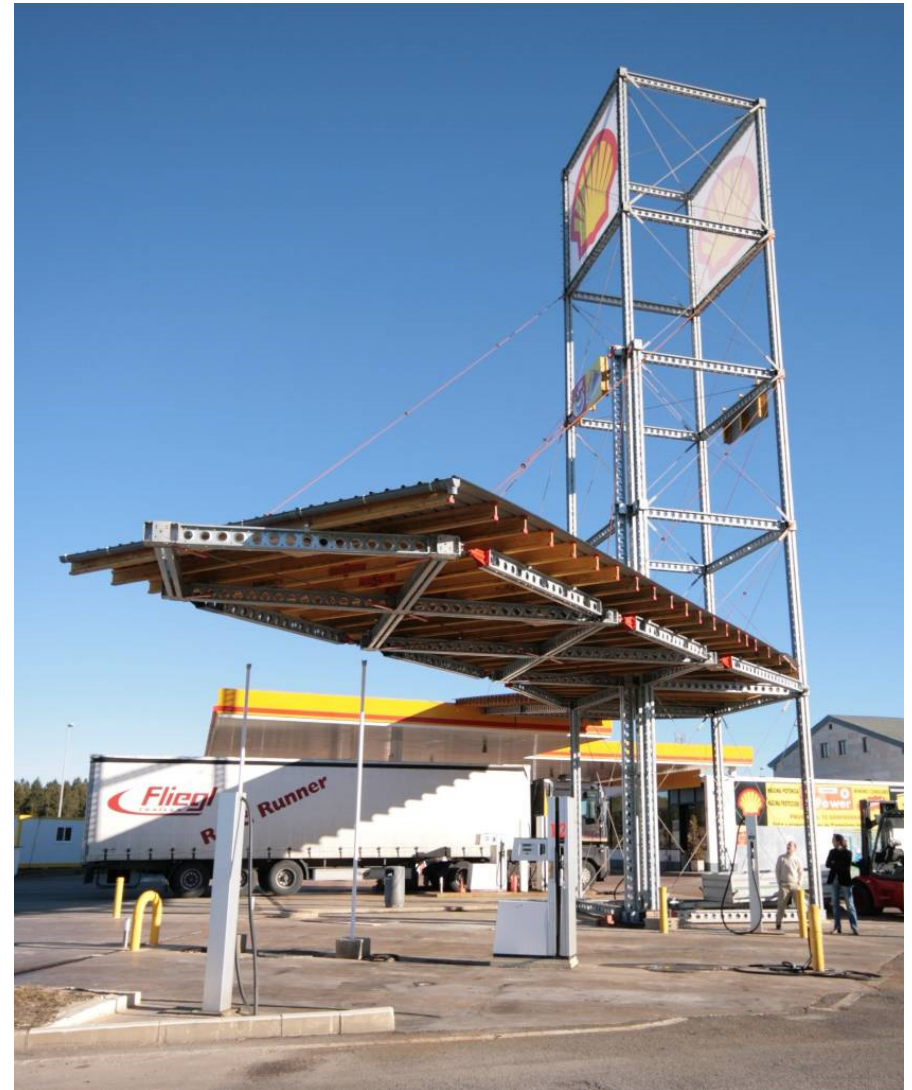
Fire Training Tower Sigüenza, Guadalajara

INCYE



Tower and canopy for petrol station El Manzanal, León

INCYE



Canal Plus Scenario

INCYE



Off-road display ramp Motor Show, Barcelona

INCYE



TV commercials

INCYE



Volvo advertisement



Orange advertisement

Supports for Vodafone advertising campaign

Bilbao and Madrid

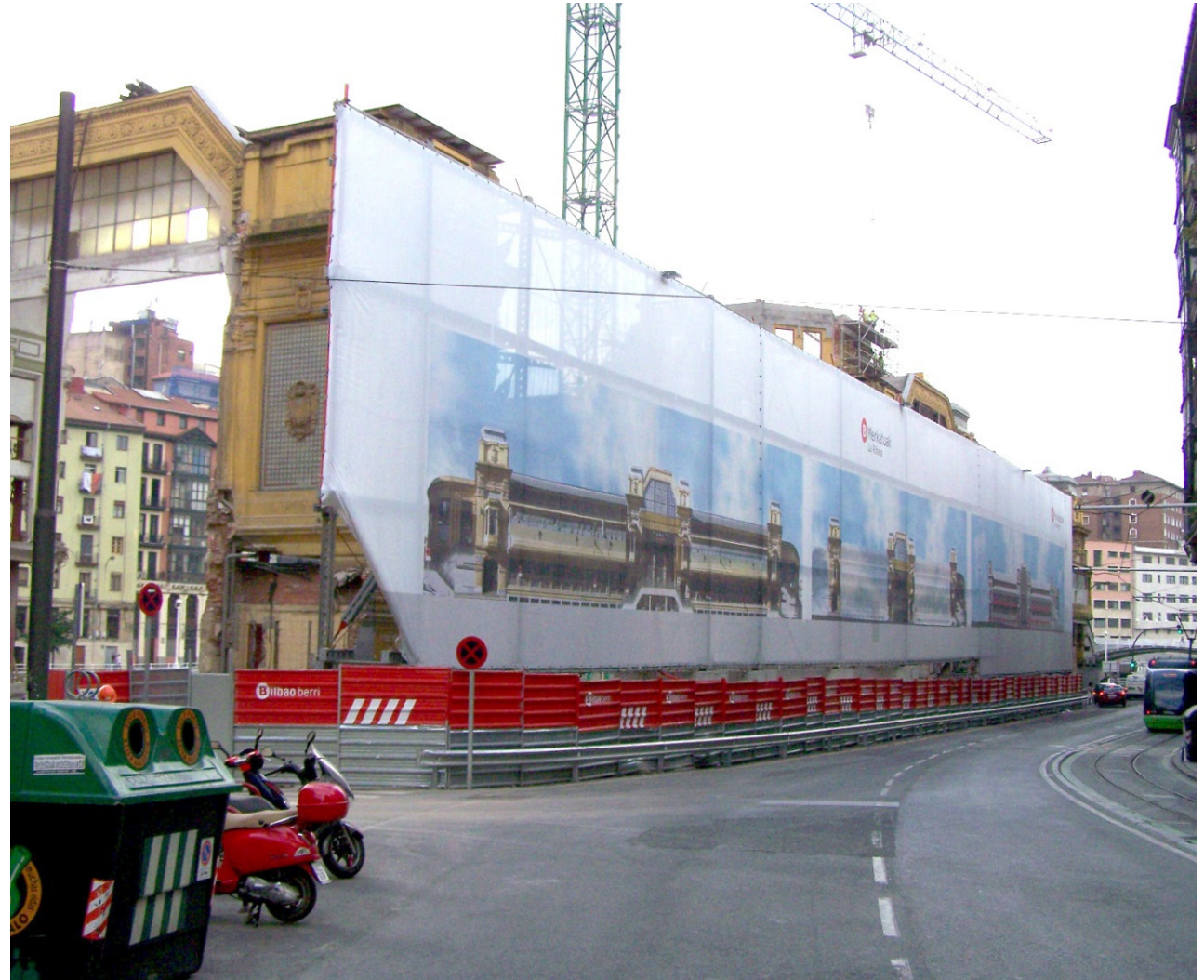
INCYE



Structure for advertising canvas

La Ribera's Market, Bilbao

INCYE



Advertising tarpaulins on facades and party walls

INCYE



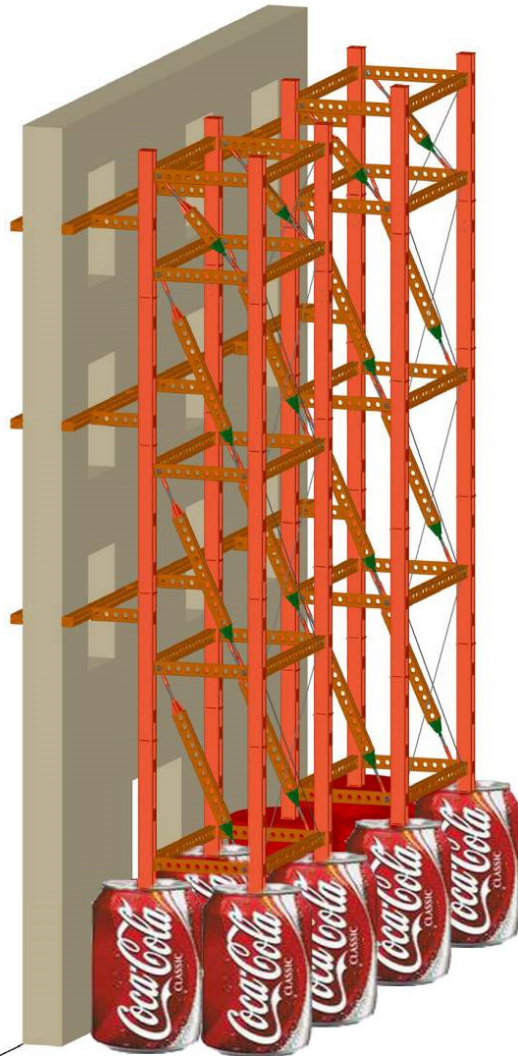
Advertising tarpaulins on facades Las Arenas Bullring, Barcelona

INCYE



Façade stabilisers as advertising supports

INCYE



Façade stabilisers as advertising supports

INCYE



Pedestrian walkways



Superslim system for modular structures

- Aesthetically pleasing, robust and versatile steel system for a wide range of applications.

