



## SINGULAR WORKS



# Sierrapando Tunnel, Cantabria, Spain

## ELSAN- SACYR

INCYE



Special metal formwork and moving carriage with external traction, with pneumatic vibrators for tunnel lining in the Torrelavega Bypass.





# Block clamps, Spain DRAGADOS

INCYE



Friction clamp for the movement of 40 tonne blocks. Port of Carboneras.

Friction clamp for the movement of 60 and 90 Tn. blocks. Port of Motril.





# Block formwork, Port Carboneras, Spain

## DRAGADOS

INCYE



Formwork for 5 tonne blocks for the protective mantle of the port.

Formwork for 40 tonne blocks for the protective mantle of the port.

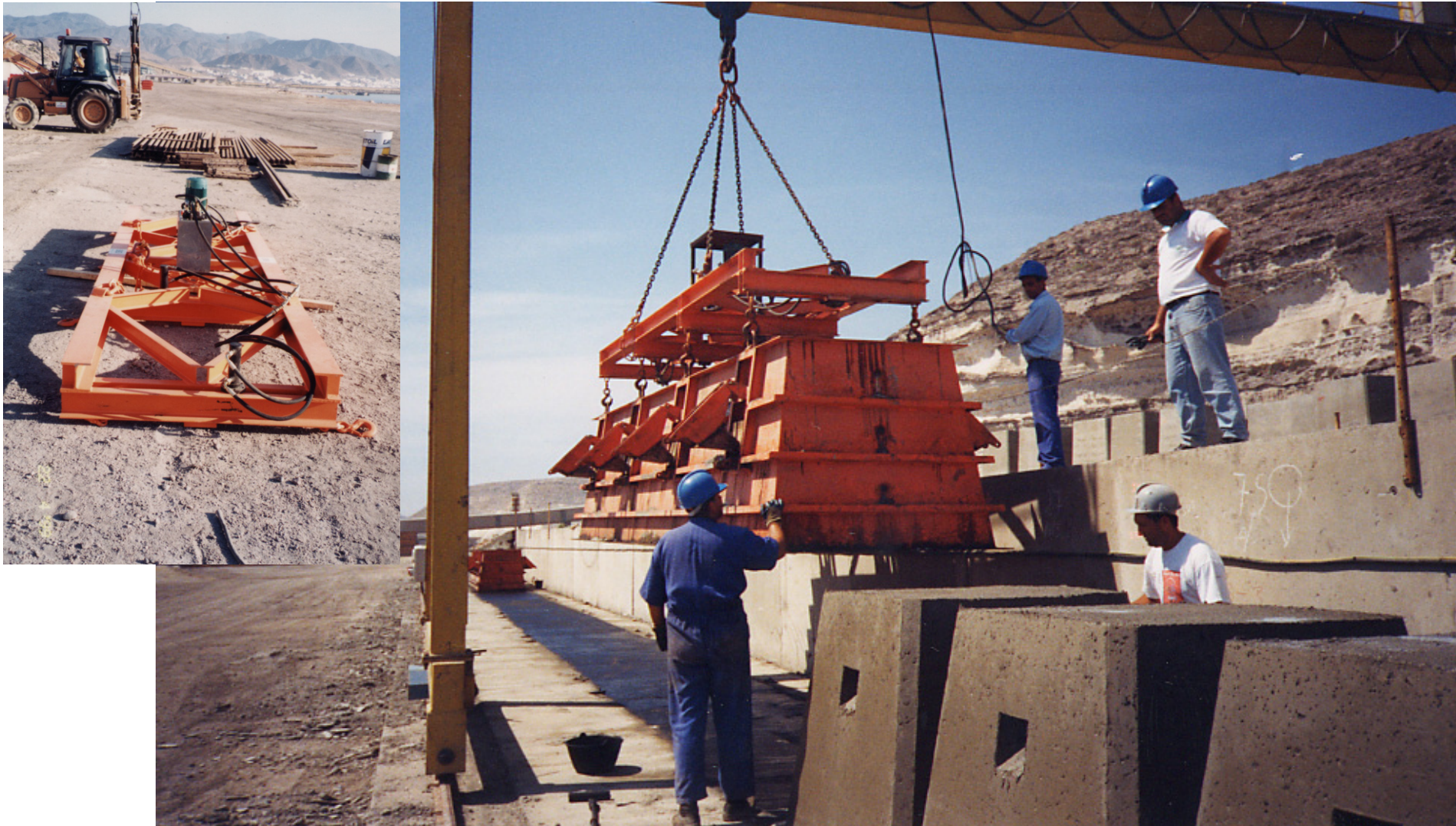




# Block formwork, Port Carboneras, Spain

## DRAGADOS

INCYE



Tool with hydraulic cylinder to facilitate the stripping of 5 Tn blocks.



# Cantilever beam trolley Reina Sofia Dock, Las Palmas, Spain FCC- DRAGADOS- OTROS

INCYE



Special 7.5 m. long trolley for concreting per execution phase. Equipped with hoists for stripping formwork, movement of special metal formwork panels for partially submerged work.





# Cantilever beam trolley Reina Sofia Dock, Las Palmas, Spain FCC- DRAGADOS- OTROS

**INCYE**



Special 7.5 m. long trolley for concreting per execution phase. Equipped with hoists for stripping formwork, movement of special metal formwork panels for partially submerged work.





# Irueña Dam, Salamanca, Spain

## FERROVIAL

INCYE



75 m high vibrated concrete dam. Special one-sided climbing formwork equipment was supplied for the dam and special formwork for access and perimeter galleries.





# Dowcomer pipe shoring at Arcelor-Romania factory

## DURO FELGUERA

INCYE



Megashor high load shoring towers for the shoring of 60 m high Dowcomer pipe with loads of 600 tons. Due to the high horizontal load component, the integrated design of the shoring tower's roll-over stabilisation lattice was necessary.

