



SLAB FORMWORK

SLAB FORMWORK

INCYE



PRODUCTS RMD k:

- TABLEFORM TABLES
(M. European)



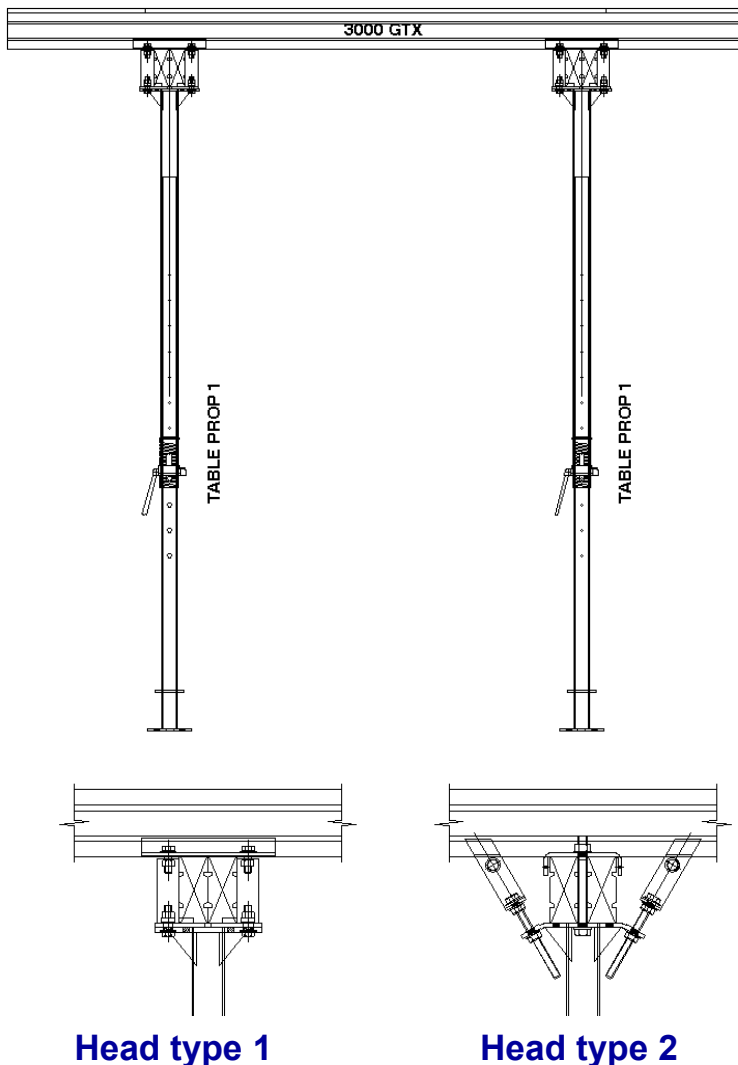
- ALSHOR PLUS TABLE
(M. American)



SLAB FORMWORK



TABLEFORM RMD k TABLE :



- Developed in UAE (RMD k Middle East)
- Wooden beam structure GTX 150
- Header for GTX 150 (2 types)
- Galvanised table props (BS 4074):
 - Strut type 1 (1895 - 3039 mm) (max 37,5 kN)
 - Strut type 2 (2305 - 3449 mm) (max 37,5 kN)

Auxiliary displacement aids:

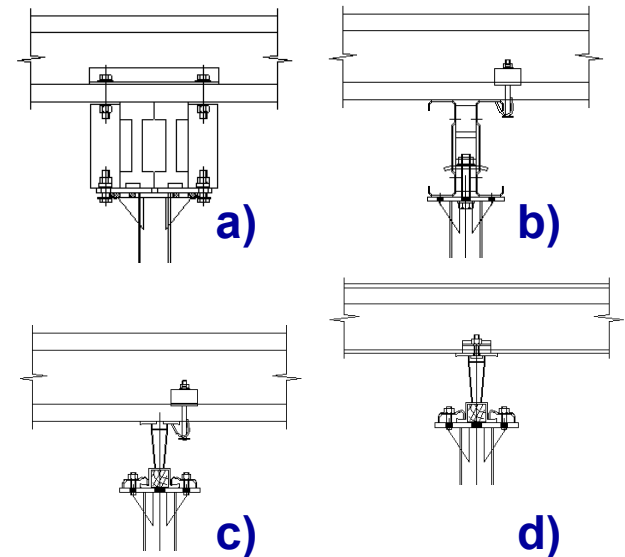
- C-hook (single - double height)
- Multipurpose Trolley
- Carro multiusos
 - Beams Slim
- Possibility of beam structure Alform Beam
 - Without head

TABLEFORM RMD k:

Variants Tableform en RMDk

- **Structure:**

- | | | |
|----|------------------------------|------------------------------|
| a) | Primary beam: Beam T 200 | Secondary beam : Beam T 200 |
| b) | Primary beam: Beam Superslim | Secondary beam : Beam T 200 |
| c) | Primary beam: Alform Beam | Secondary beam : Beam T 200 |
| d) | Primary beam: Alform Beam | Secondary beam : Alform Beam |



- **Struts:**

- a) 2 sizes Galvanised table props (type 1 - type 2) up to 3449 mm
- b) 3 sizes Galvanised table props (type 1 - type 2 - type 3) up to 4870 mm

- **Board :**

- a) Three-layer 21 mm
- b) Three-layer 27 mm
- c) Phenolic plywood 21 mm
- d) Other (special plasticised / metallic boards)

SLAB FORMWORK

INCYE



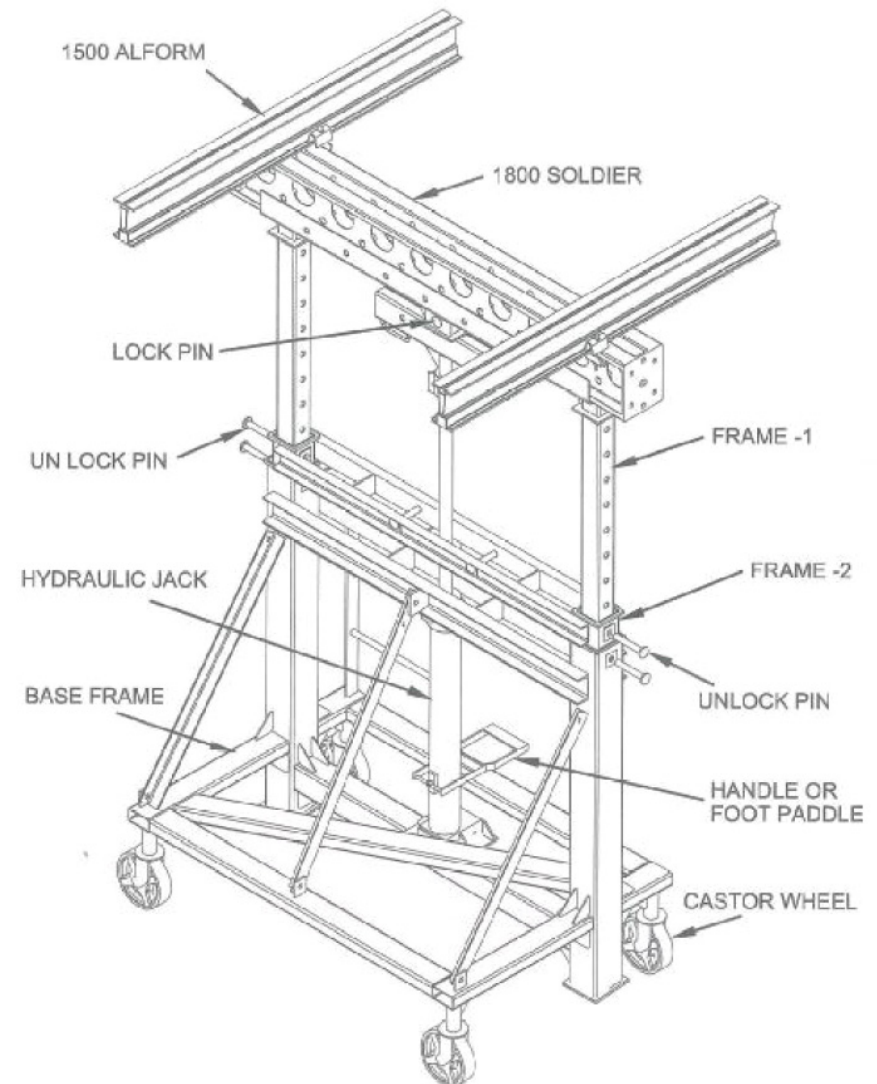
SLAB FORMWORK

INCYE



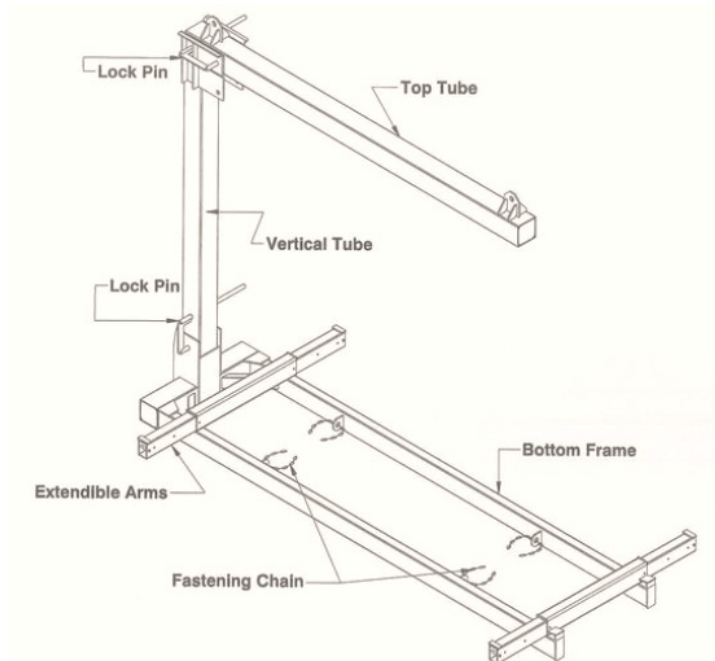
SLAB FORMWORK

INCYE



SLAB FORMWORK

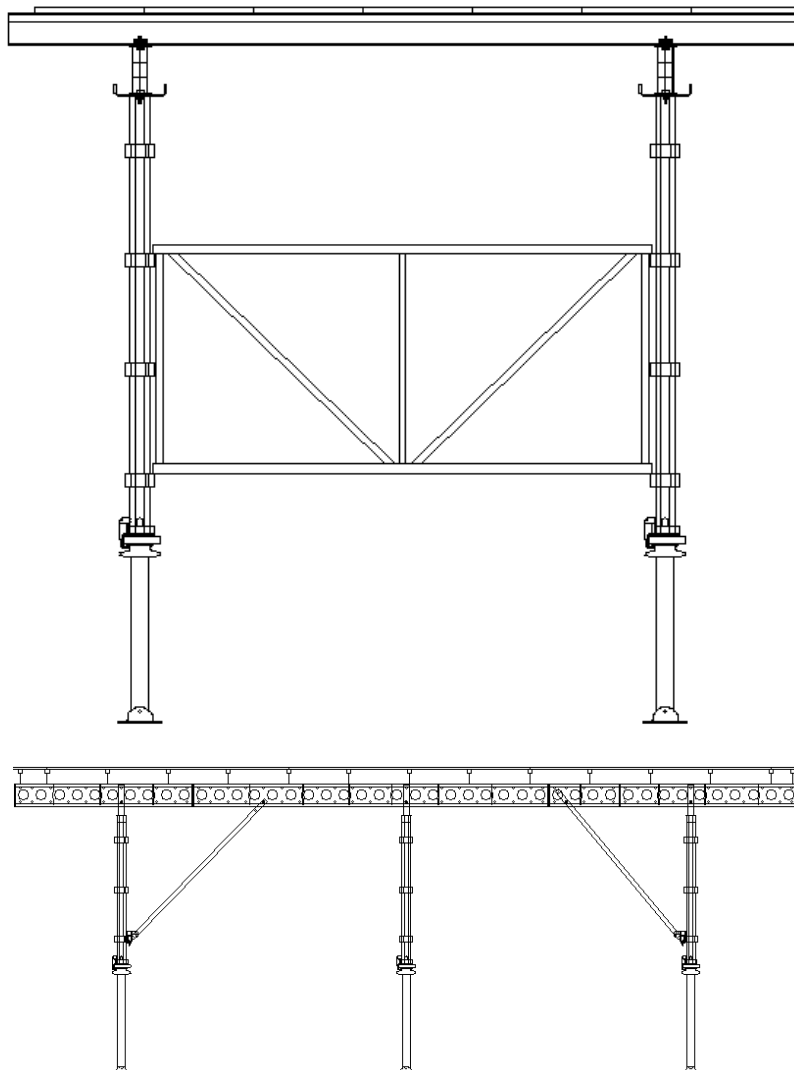
INCYE



SLAB FORMWORK



Table ALSHOR PLUS RMD k:



- Developed in UK
- Aluminium beam structure: Albeam - Alform
- Support: ALSHOR PLUS system (max. 120 kN)
 - Bracing with frames essential
 - Height up to 22 m
 - Floor jack with quick release mechanism
- Travelling aids::
 - Alshor Plus "C" hooks
 - Castor wheels
- Special table geometries possible::
 - Sslim beams
- "Lightened solution" (C. C. Glasgow)
 - a) Primary beams: Superslim
 - b) Special Sslim head
 - c) Tube with javelin

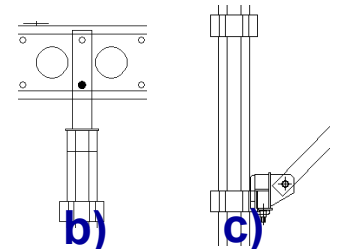




Table ALSHOR PLUS RMD k:

Table Variants Alshor Plus en RMDk

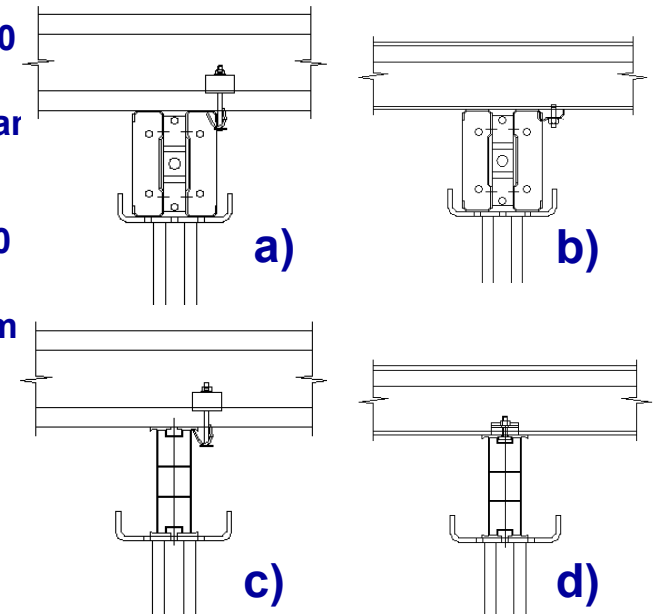
- **Structure :**

a) Primary beam: beam Superslim Secondary beam: : beam T 200

b) Primary beam : beam Superslim Secondary beam: : Alform Bear

c) Primary beam : beam Albeam Secondary beam: : beam T 200

d) Primary beam : beam Albeam Secondary beam: : Alform Beam



- **Support:**

a) Standard system (with complete racks).

b) System "lightened solution".

Board:

a) Three-layer 21 mm

b) Three-layer 27 mm

c) Phenolic plywood 21 mm

d) Other (special plasticised / metallic boards)

SLAB FORMWORK

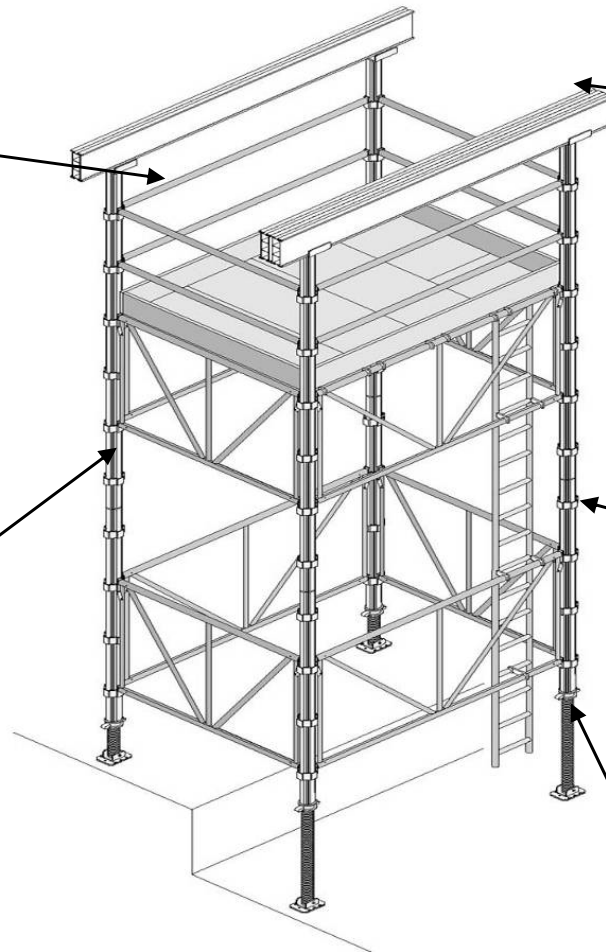
INCYE



Safety in mind
with separate handrail. Effortless installation
without the need for tube and clamp.



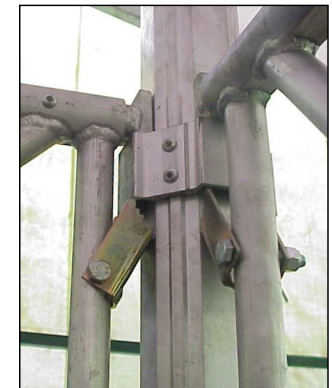
Instant fixing of connecting spigot.
Aluminium spigot with built-in locking pin.
No bolt connection required



U-heads and
removable bases.
Double width U-head
with space for single or
double primary beams.



Alshor Plus with rapid
discharge



Quick connection of
racks to verticals

TABLE FORM

INCYE



Soho Mall, Panamá City, Panamá

CONLOSA

INCYE



Soho Mall, Panamá City, Panamá

CONLOSA

INCYE

